

Champagne Tourney Magdeburg 2026

The Tourney is opened worldwide.

It is divided in 2 sections (with separate awards) :

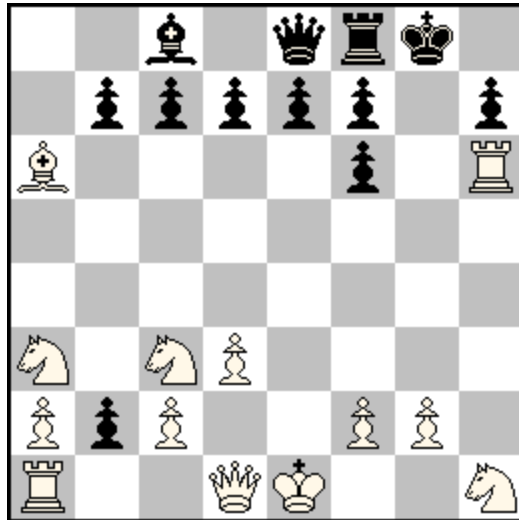
A . ProofGames B. Any other kind of Retro problems

Theme :

2 pieces of opposite colour occupy a common set of at least 2 squares.

Example for Section A :

Pascal WASSONG Phénix 1997 (v)



SPG 16,5

(13+12) C+

2b1qrk1/1ppppp1p/B4p1R/8/8/S1SP4/PpP2PP1/R2QK2S

1.h4 Cc6 2.h5 Cd4 3.h6 C×é2 4.C×é2 a5 5.Céc3 Ta6 6.F×a6 a4 7.d3 a3
 8.Fg5 a×b2 9.Ff6 g×f6 10.Ca3 Fg7 11.h×g7 **Ch6!** 12.g8=C **Cf5!**
 13.**Ch6 Cg3!** 14.**Cf5** 0-0 15.**Th6 Ch1!** 16.**Cg3** D68 17.**C×h1**

Thematic pieces 1 : promoted wS-bSg8

Thematic squares : g8-h6-f5-g3-h1(=5)

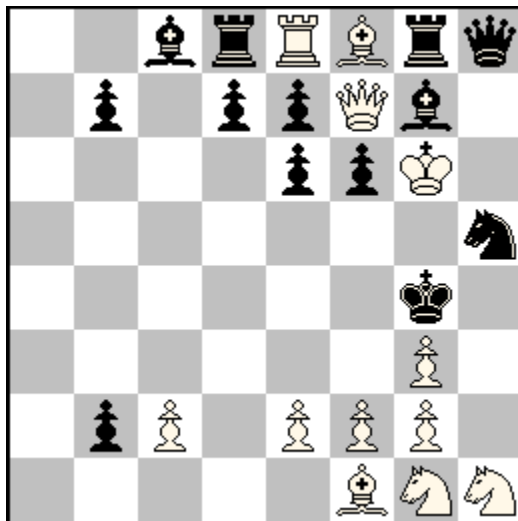
Thematic pieces 2 : wRh1-bSg8

Thematic squares : h1-h6(=2)

(the pieces don't need to be the same kind)

Example for Section B :

Michel CAILLAUD France-Echecs 2005
“Retour à l'envoyeur”, dédié à petiteglise



Last 21 Single Moves? (12+13)
1‡ (who?)

2brRBrq/1p1ppQb1/4ppK1/7s/6k1/6P1/1pP1PPP1/5BSS

- 1. Cf3-g1 b3-b2 -2. Cd4-f3 b4-b3 -3. Cç6-d4 b5-b4 -4. Cb8-ç6 b6-b5
-5. ç7×Cb8=C Cç6-b8 -6. d6×Pç7 Cd4-ç6 -7. d5-d6 Cf3-d4
-8. d4-d5 Cg1-f3 -9. d3-d4 h2×Tg1=C -10. d2-d3 h3-h2 -11. h2×Cg3
Black is to play : 1. Dh6‡! (1.f3‡? is illegal)

Thematic pieces : promoted wS-promoted bS
Thematic squares : g1-f3-d4-ç6-b8(=5)

Fairy conditions are allowed in both sections.
(fairy pieces allowed only when integrated in a fairy condition,
such as Chinese Chess, Berolina Chess, Knightmate...)

Maximum 2 entries per composer per section (collaboration counts for 1 full entry).

Maximum 1 non computer tested entry per composer in section A

Entries to the director Michel Caillaud, by Friday 7th August 20:00 PM

e-mail : caillaud1957@gmail.com

who will transmit problems to the judge Éric Pichouron in anonymous form.

Prizes in each section :

subscription (pdf) to Phénix 2026 for the first place,

Winchloé light for the second place

Thanks to Laurent Riguet and Christian Poisson for providing the Prizes!

Phénix, created by Denis Blondel, now edited by Laurent, is the french problem magazine, with retro section run by Thierry Le Gleuher, and regularly published retro articles.

<http://www.phenix-echeecs.fr/>

also on Facebook...

Winchloé light, developed by Christian, is a problem database, updated every month (now 995321 problems and studies).

The most complete database for Proofgames (now 9900 of them).

<http://winchloe.free.fr/>